



Chestnut Road , Vange, SS16 4TD Guide Price £200,000

** GUIDE PRICE £200,000 - £210,000 **

Cowling & Payne are delighted to market this CHAIN FREE, TWO bedroom apartment, situated in the popular Chestnut Road area of Basildon, offering spacious accommodation throughout and an excellent opportunity for first-time buyers, downsizers, or buy-to-let investors alike.

The property features a bright and airy lounge/diner, a fitted kitchen with ample storage and workspace, two well-proportioned bedrooms, and a modern family bathroom.

Residents will appreciate the convenience of communal parking.

The property also benefits from an extended lease with approximately 159 years remaining.

The location is particularly advantageous, with local amenities just a stone's throw away, providing easy access to shops, cafes, and essential services. Pitsea railway station is nearby, offering excellent transport links providing direct connections into London Fenchurch Street & the surrounding areas.

Please note library photos are used for listing

- GUIDE PRICE £200,000 - £210,000
- PEPPERCORN GROUND RENT
- MODERN FITTED KITCHEN
- MASTER BEDROOM WITH FITTED WARDROBES & DRAWERS
- TWO BEDROOM
- MODERN BATHROOM WITH SHOWER
- RESIDENT PARKING
- LONG LEASE OF APPROX 159 YEARS REMAINING
- COUNCIL TAX BAND 'B'
- ENERGY PERFORMANCE RATING 'B'

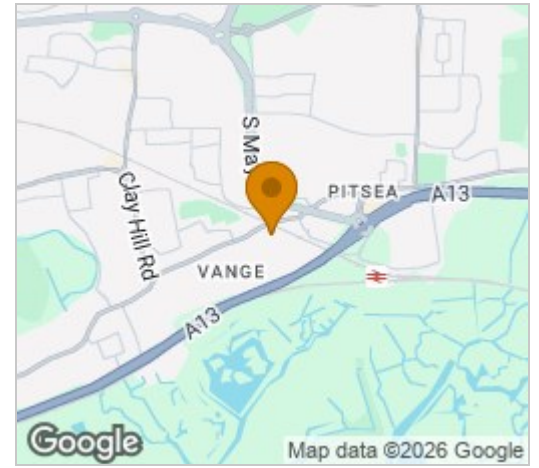
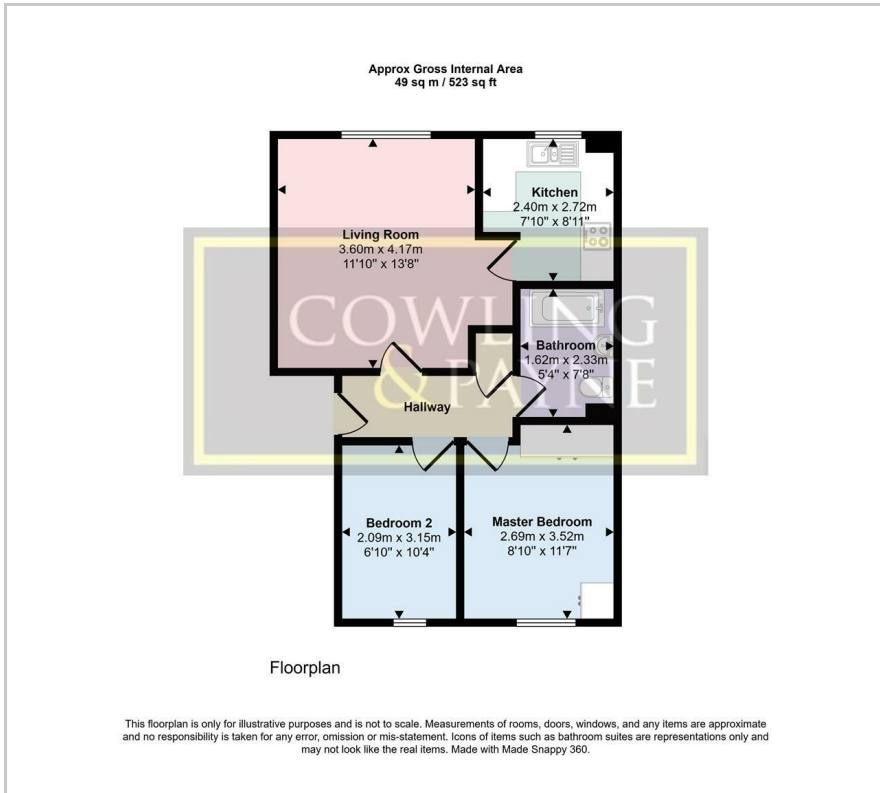
Viewing

Please contact our Lettings Office on 01268 730707 if you wish to arrange a viewing appointment for this property or require further information.

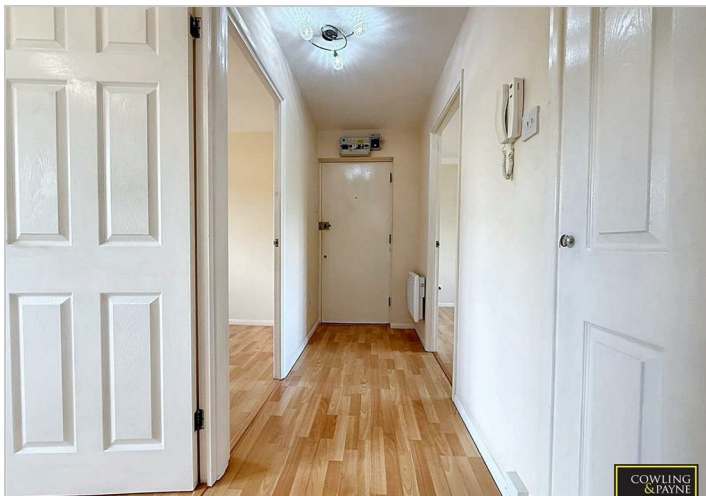
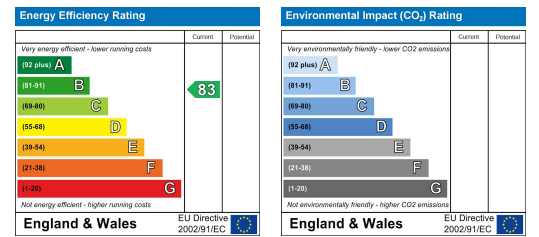


Floor Plan

Area Map



Energy Efficiency Graph



These particulars, whilst believed to be accurate are set out as a general outline only for guidance and do not constitute any part of an offer or contract. Intending purchasers should not rely on them as statements of representation of fact, but must satisfy themselves by inspection or otherwise as to their accuracy. No person in this firm's employment has the authority to make or give any representation or warranty in respect of the property.